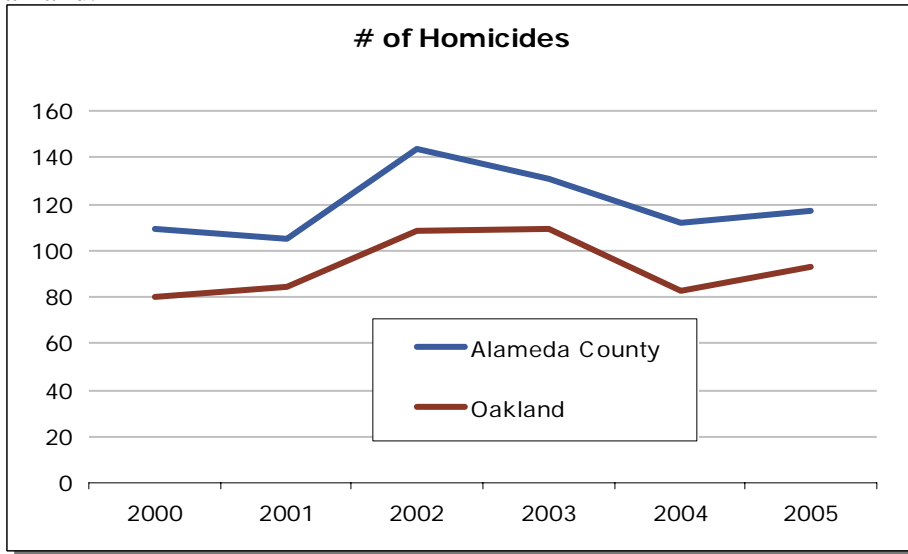


Homicide in Alameda County: A Fact Sheet

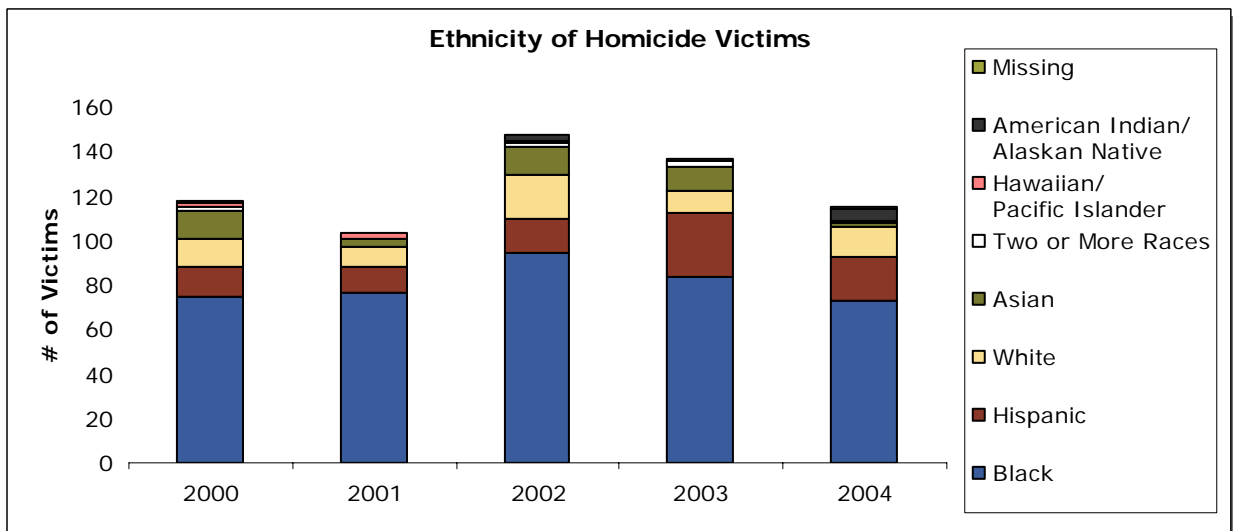
- There were **718 homicides in Alameda County** from 2000 through 2005. The low for the six years occurred in 2001, when there were 105 homicides in the county.
- From 2000 through 2005, homicides in **Oakland accounted for over 70%** of all homicides in Alameda County.
- In 2005 there were 117 homicides in Alameda County, 93 of which took place in Oakland.



We are on the verge of losing an entire generation of our young people, killing and dying on the streets of America.
Ron Dellums,
Mayor of Oakland

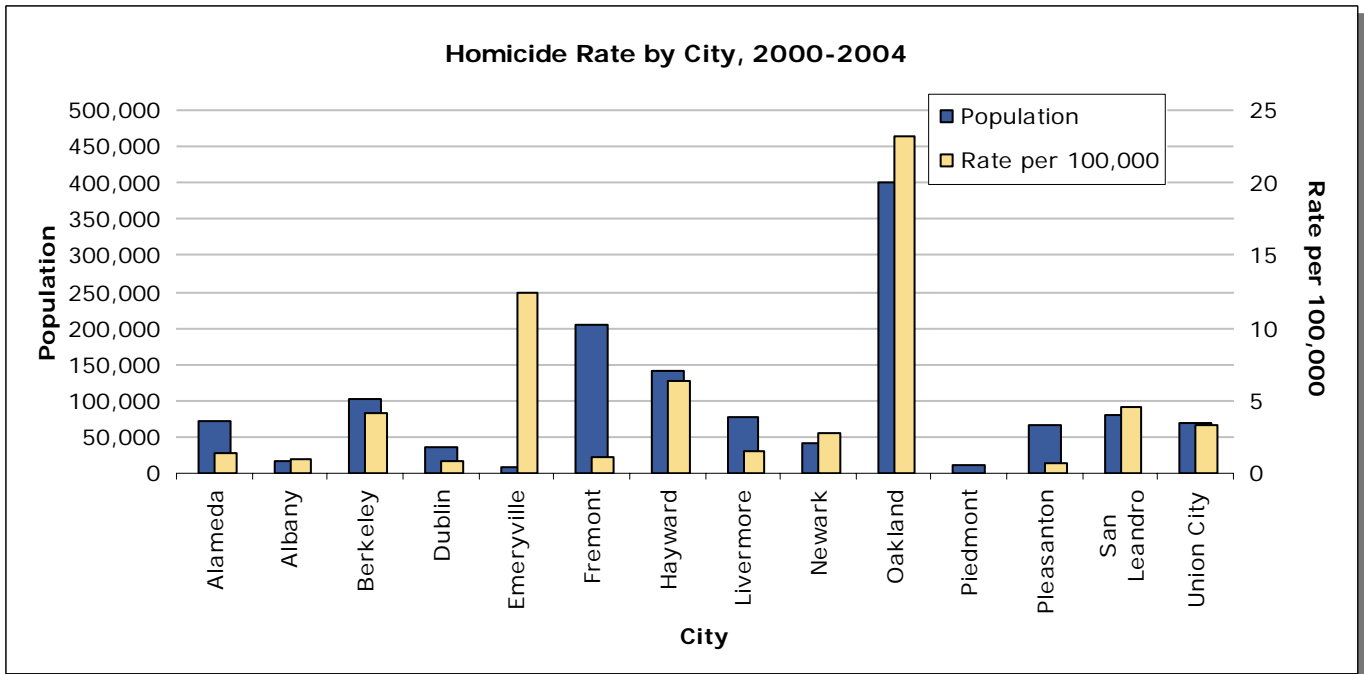
Source: US Department of Justice, Federal Bureau of Investigation. Uniform Crime Reporting Program Data: Crime in the United States 2000-2005 [Computer Files].

- The majority of homicide victims in Alameda County (65%) were African American.
- The number of Hispanic homicide victims increased during the four-year period of 2000-2004. The number of Hispanic residents in Alameda County also increased during this same four-year period.

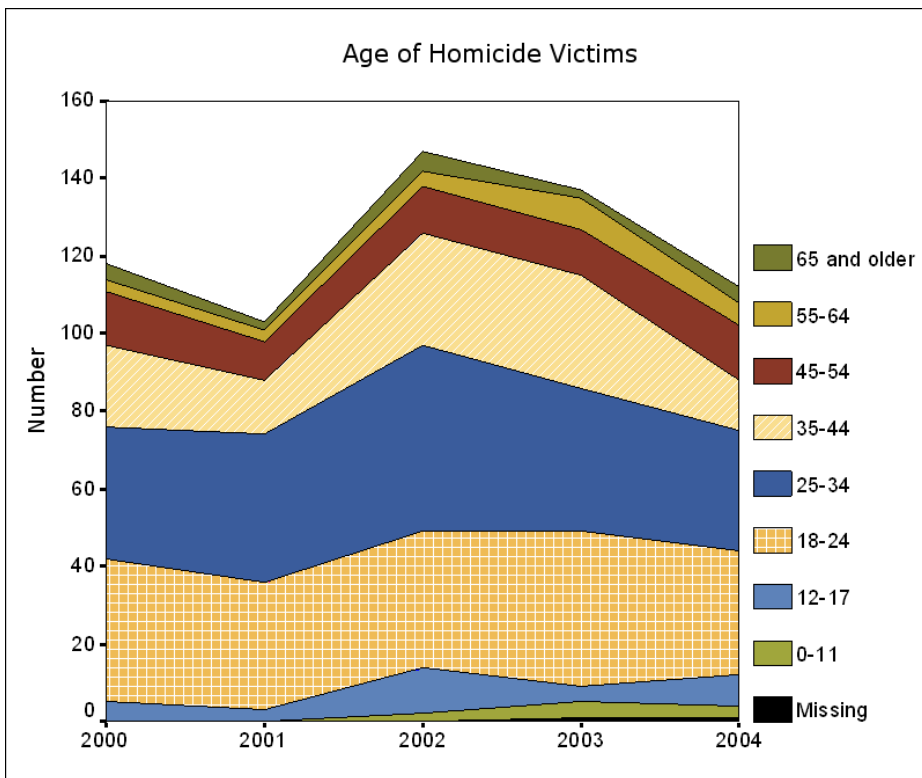


Source: Alameda County Public Health Department.

- Oakland residents made up 78% of homicide victims in Alameda County from 2000 through 2004, followed by Hayward residents who made up 8% of homicide victims in Alameda County.
- Emeryville has a rate of 12.4 homicides per 100,000 people. There were a total of 6 homicides in Emeryville from 2000 through 2004.



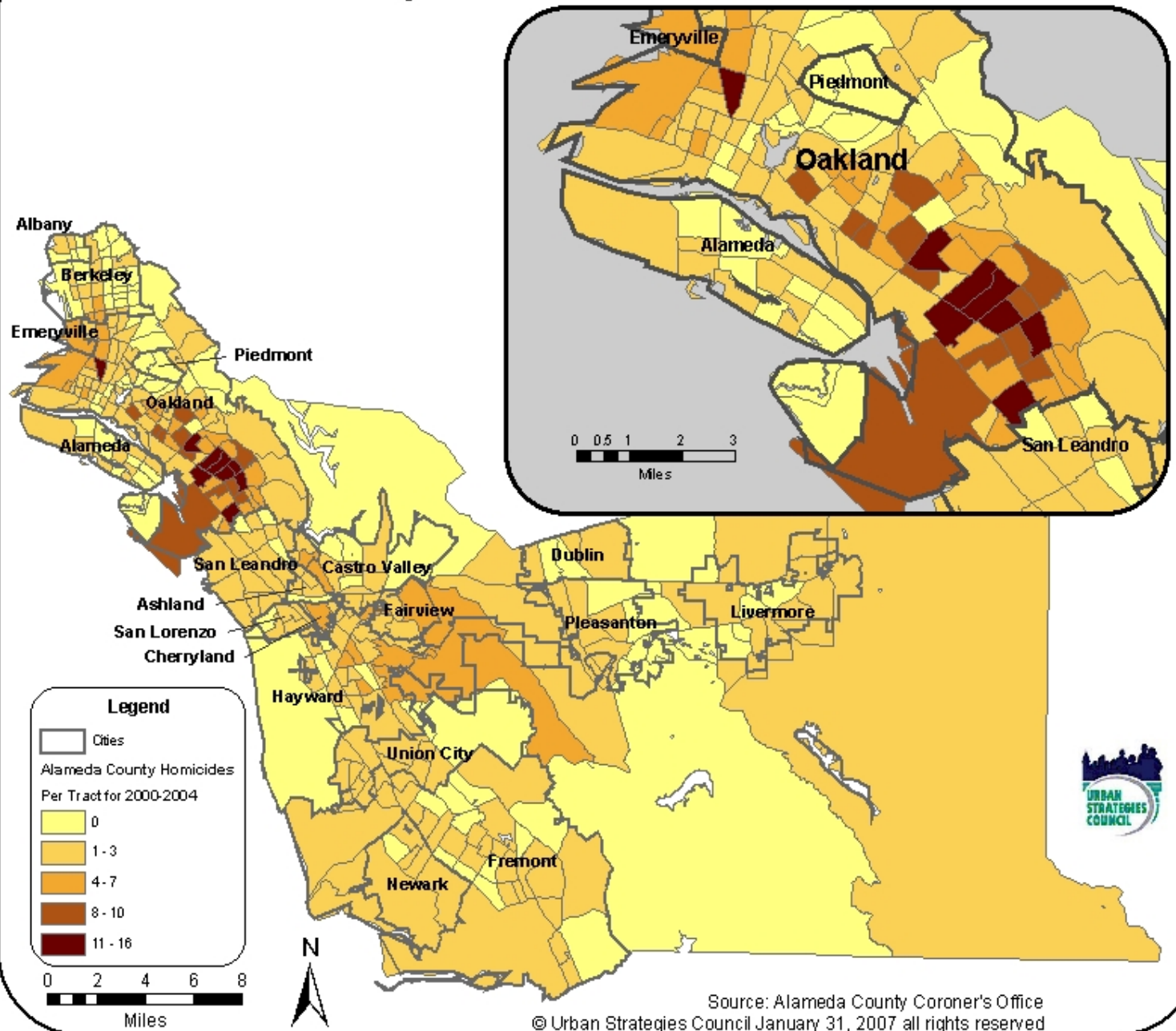
Source: FBI Uniform Crime Report.
 Note: Emeryville rate not reliable due to small numbers.



- This chart shows the relative size of victims' age groupings to each other and to the overall homicide trend in Alameda County.
- One in two homicide victims were between the ages of 18 and 34.
- Homicide victims ranged in age from less than 5 years old to 80+ years old.

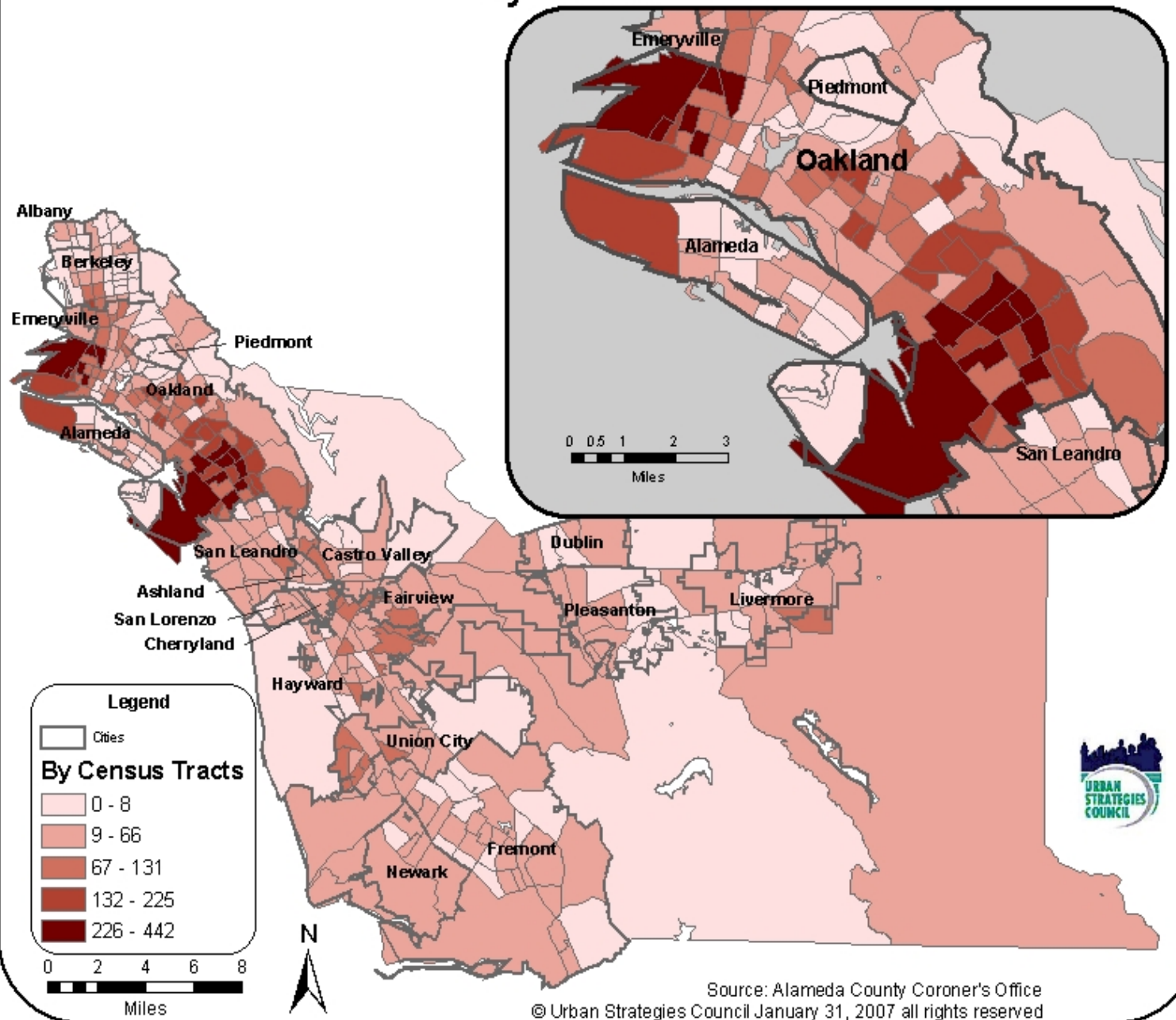
Source: Alameda County Public Health Department.

Alameda County Homicides 2000-2004 Per Census Tract

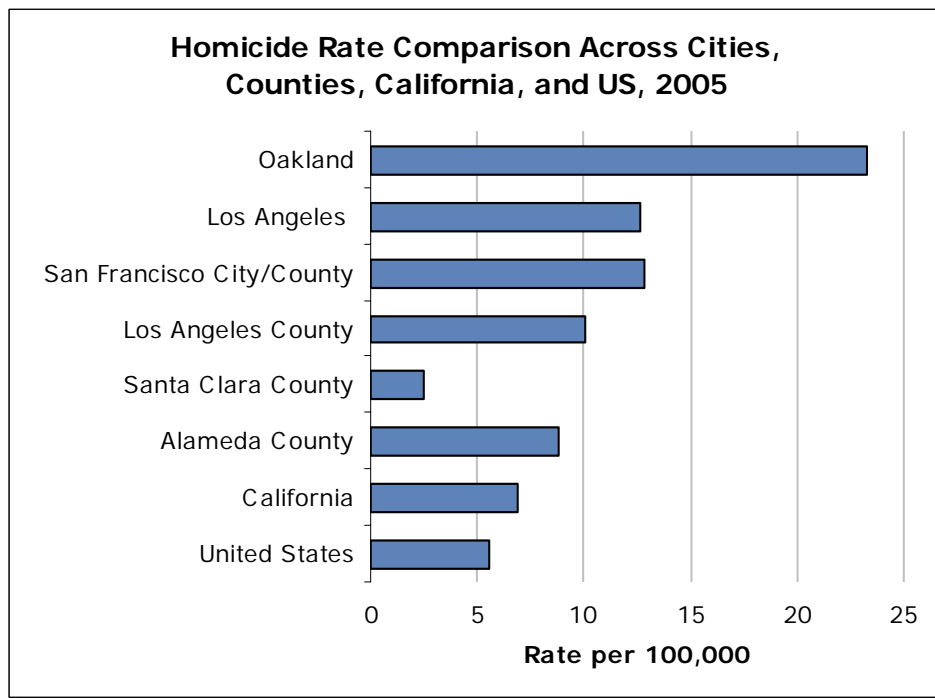


- The map shows the number of homicides in Alameda by Census Tract. On average, there was one homicide per census tract in Alameda County from 2000 through 2004.
- While homicides occurred throughout Alameda County, the majority occurred in East and West Oakland.
- Berkeley, Cherryland, and Hayward also had several homicides between 2000-2004.

Alameda County Homicides Per 100,000 Residents 2000-2004 By Census Tract



- The homicide rate for Alameda County is 8.8 homicides per 100,000 people.
- Several tracts within Oakland have rates more than 34 times higher than the County average of 8.8 homicides per 100,000 people.
- While the numbers of homicides are concentrated in East Oakland, the rates reveal the problem is just as severe in West Oakland.



Source: US Department of Justice, Federal Bureau of Investigation. Uniform Crime Reporting Program Data: Crime in the United States 2005 [Computer Files].

Between 2001 and 2003, 333 people died in Alameda County due to motor vehicle crashes. The motor vehicle crash mortality rate for Alameda County was 7.6 deaths per 100,000 people.

The United States lost 58,253 men and women during the Vietnam War. This translates to a rate of 26.5 deaths per 100,000 people.

From 1986 through 2005 there were 391,821 homicides in the United States or a rate of roughly 7.4 per 100,000.

Murder and non-negligent manslaughter: The willful (non-negligent) killing of one human being by another. Deaths caused by negligence, attempts to kill, assaults to kill, suicides, and accidental deaths are excluded. **Justifiable homicides** are classified separately and include: (1) the killing of a felon by a law enforcement officer in the line of duty; or (2) the killing of a felon, during the commission of a felony, by a private citizen. (3) **Manslaughter by negligence:** the killing of another person through gross negligence. Traffic fatalities are excluded.



For more information, please contact
 Steve Spiker
 steves@urbanstrategies.org
 Urban Strategies Council
 672 13th Street
 Oakland, CA 94612

© Urban Strategies
 Council, May 2007. All
 rights reserved.

**Violence
 Prevention
 Initiative**
 Alameda
 County